

D500 Undercounter Dishwasher

Technical Specifications



CLASSEQ
Warewashing Made Simple.

D500

Front loading commercial dishwasher with three minute wash cycle and simple two button controls for effortless, consistently clean results.

The D500 is an easy to operate dishwasher with a 500 x 500mm basket that holds 18 full-sized plates. With a choice of three wash cycles, this machine is capable of cleaning up to 360 plates per hour.

The digital LCD display accurately shows the temperature of the wash tank and rinse boiler, reassuring the operator that it is up to temperature and fully sanitising during the wash cycle.

With intuitive colour coded lighting and universally recognised symbols, this machine is incredibly easy to use, plus features performance enhancing customisations through its advanced settings modes. Additionally, its clever software constantly monitors wash cycles, temperatures, chemical usage and any errors giving valuable data which is used to improve operational efficiencies.

The D500 comes as standard with a drain pump along with chemical pumps





UK Manufactured

Our machines are Made in Britain (Staffordshire).



User Friendly

We've maximised our user experience through, two simple button controls.



Simple Colour Coded Display

Amber flashing - Machine heating
Blue - Machine in cycle
Red - Error management activated
Green - Standby mode



LCD display

The D500 enhances user functionality by displaying rinse and wash tank temperatures.



3 Wash Programs

Light (2 min), standard (3min) and heavy (5min) cycles allow for maximum output without compromising wash quality.



Advanced Customer Features

Adjust rinse aid and detergent settings and priming of chemical pumps.



Operational Monitoring

Our machine constantly monitors heating and water usage to improve the efficiency.

Machine Features:

1 500mm x 500mm basket	2 Built-in chemical pumps	3 Energy saving standby mode	4 Removable basket guides
5 Dual wash filter system	6 Temperature interlock - guarantees hot rinse	7 Assisted self-clean	8 Noise reducing double skinned door

Hydraulic specifications

Water supply connection	G3/4" (3/4" BSP)
Minimum allowed supply water pressure	2.0 bar
Required water flow rate	11 L/min
Minimum incoming water temperature	4°C
Maximum incoming water temperature	55°C
Gravity drain height (from machine base)	40 mm
Pumped drain height (from machine base)	600 mm

Electrical specifications

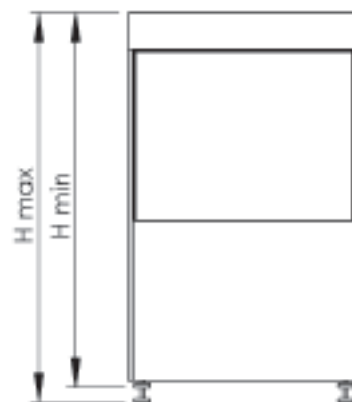
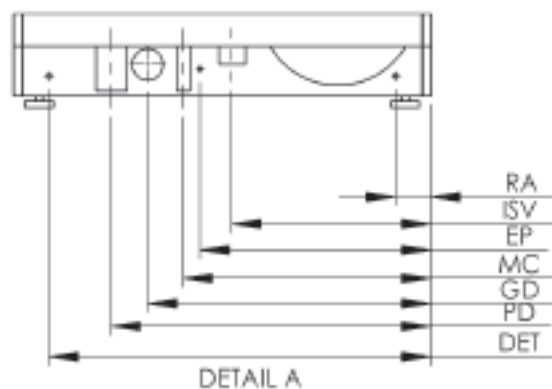
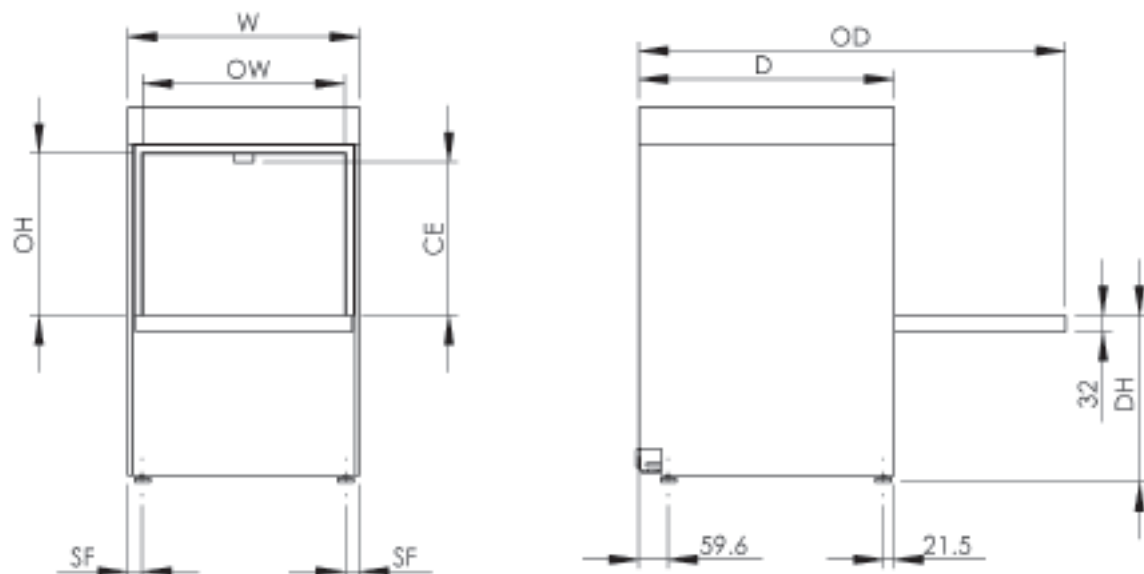
Standard Set-up

Amps Required	15A (1 phase)
Standard Operating Voltage	220-230V / 1N~ / 50Hz
Total Connected Load	3.18kW

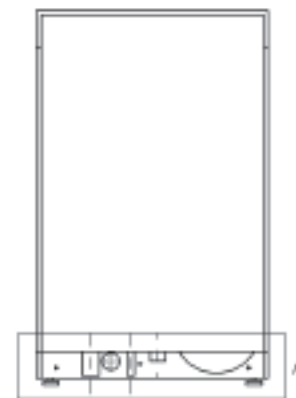
Performance

Wash tank element	2.00kW
Rinse tank element	2.6kW
Wash tank capacity	14.5 litres
Rinse tank capacity	7.5 litres
Rinse water consumption at 3 bar	3.00 L/cycle
Theoretical maximum racks/hours	20
Wash tank temperature	55°C
Rinse tank temperature	82°C
Wash pump power	0.58 kW
Rinse pump power	N/A

Mechanical Specifications



Wash water temperature	55°C
Dish Washer rinse temperature	82°C
Noise level	Under 70dB
Empty weight	44kg
Fully Loaded weight	64.5kg
Packed weight	57.6kg



Dimensions (mm):

550 (W) x 830 (H) (860 max) x 605 (D)

Description	Symbol	Radius from machine (m)
Rinse aid tube	RA	3
Inlet solenoid valve	ISV	1.8
Mains electrical cable	EC	1.3
Pumped waste water outlet	PD	1.5
Equipotential bonding stud	EP	-
Detergent tube	DET	3

Please Note: All dimensions in mm

Contact:

Telephone: +61 2 9645 3221

Email: sales@winterhalter.com.au

Unit 4, 74 Helen Street,

Sefton, NSW, 2162

www.classeq.com.au

CLASSEQ
Warewashing Made Simple.

D500DUO Undercounter Dishwasher

Technical Specifications



CLASSEQ
Warewashing Made Simple.

D500DUO

Front-loading commercial dishwasher with a digital display, three wash programs and WRAS compliance for effortless and consistently clean results.

The D500DUO is an easy to operate, under counter dishwasher with a 500 x 500mm basket that holds 18 full-sized plates. It features three wash cycles light (2min), standard (3min) and heavy (5min) - ensuring that it is optimised for cleaning some of the toughest warewashing requirements.

The digital LCD display accurately shows the temperature of the wash tank and rinse boiler, re-assuring the operator that it is up to temperature and fully sanitising during the wash cycle.

With intuitive colour coded lighting and universally recognised symbols, this machine has been designed to make operating as simple as possible, whilst also featuring performance enhancing customisations through its advanced settings mode. Additionally, its clever software constantly monitors wash cycles, temperatures, chemical usage and any errors giving valuable data which is used to improve operational efficiencies.

The Duo range of products all come with drain pumps, rinse booster pumps, built in chemical dispensers and full double skinned construction ensuring they meet all installation regulations and requirements.





UK Manufactured

Our machines are Made in Britain (Staffordshire).



LCD display

The D500DUO enhances user functionality by displaying rinse and wash tank temperatures.



Water Board (WRAS) compliant

All Duo machines are fully compliant with essential Water Board regulations.



Colour Coded Display

Amber flashing - Machine heating
Blue - Machine in cycle
Green - Machine ready



3 Wash Programs

The D500DUO Light (2 min), Standard (3min) and heavy (5min) cycles allow for maximum output without compromising wash quality.



Double skinned sides and door

Allows for quieter operation and reduced heat loss.



Advanced Customer Features

Adjust rinse aid and detergent settings, priming of chemical pumps and set water softener to match local water hardness levels (WS models only).



Operational Data monitoring

Our machine constantly measures all cycles, heating and errors providing useful data for improving efficiencies.

Hydraulic specifications

Water supply connection

Minimum allowed supply water pressure

Required water flow rate

Minimum incoming water temperature

Maximum incoming water temperature

Pumped drain height (from machine base)

D500DUO

G3/4" (3/4" BSP)

0.5 bar D500DUO model only

11 L/min D500DUO model only

4°C

55°C

600 mm

Electrical specifications

Standard Set-up

Amps Required

Standard Operating Voltage

Total Connected Load

15 a (1 phase)

220-230V / 1N~ / 50Hz

3.18kW

Performance

Wash tank element

Rinse tank element

Wash tank capacity

Rinse tank capacity

Rinse water consumption at 3 bar

Theoretical maximum racks/hours

Wash tank temperature

Rinse tank temperature

Wash pump power

Rinse pump power

2.00kW

2.60kW

14.33 litres

7.5 litres

3.00 L/cycle

20

55°C

82°C

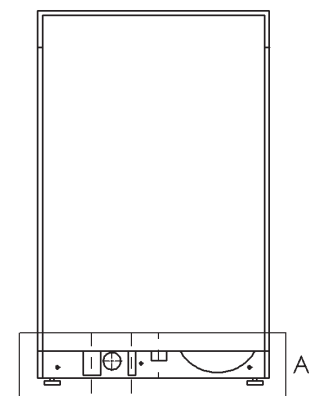
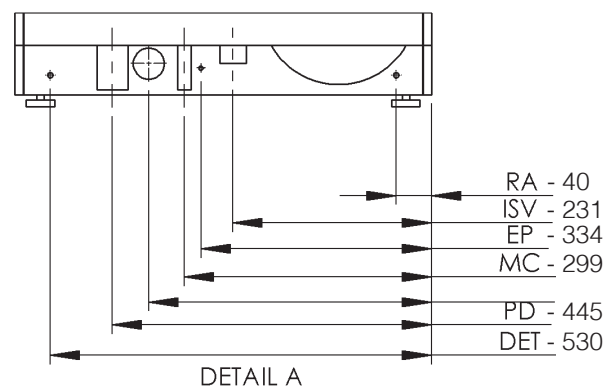
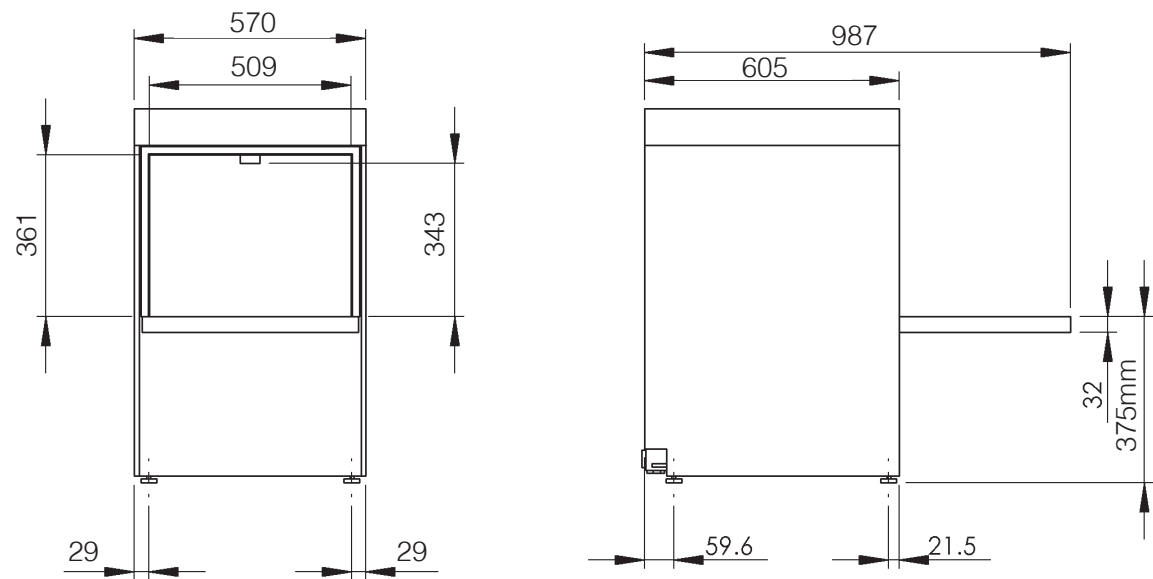
0.58 kW

0.19 kW

Machine Features:

1 500mm x 500mm basket	2 Built-in chemical pumps	3 Drain pump	4 Rinse Booster Pump	5 Temperature interlock - guarantees hot rinse
6 Energy saving standby mode	7 Stainless steel dual wash filter system	8 Assisted self-clean	9 Easily removable components	

Mechanical Specifications



Additional Info:

Wash water temperature	D500DUO 55°C
Dish Washer rinse temperature	82°C
Noise level	Under 70dB
Empty weight	54.7kg
Fully Loaded weight	75.2kg
Packed weight	68.3kg DUO model

Dimensions (mm):
570 (W) x 830 (H) (860 max) x 605 (D)

Description	Symbol	Radius from machine (m)
Rinse aid tube	RA	3
Inlet solenoid value	ISV	1.8
Mains electrical cable	EC	1.3
Pumped waster water outlet	PD	1.5
Equipotential bonding stud	EP	-
Detergent tube	DET	3

Please Note: All dimensions in mm

G400 Undercounter Glasswasher

Technical Specifications



CLASSEQ
Warewashing Made Simple.

G400

Compact, front loading and with simple two button controls for effortless, consistently clean results, the G400 is the perfect glasswasher for where space is limited.

The G400 is an easy to operate glass washer with a 350mm x 350mm basket that holds 16 pint-sized glasses. With its two minute wash cycles, this machine is capable of cleaning up to 480 pint glasses per hour.

With a digital LED display, intuitive colour coded lighting and universally recognised symbols, this machine is incredibly easy to use, plus features performance enhancing customisations through its advanced settings modes. Additionally, its clever software constantly monitors wash cycles, temperatures, chemical usage and any errors giving valuable data which is used to improve operational efficiencies.

The G400 comes as standard with a drain pump along with chemical pumps.



Warewashing made simple:



UK Manufactured
Our machines are Made in Britain (Staffordshire).



User Friendly
We've maximised our user experience through, two simple button controls.



Colour Coded Display
Amber flashing - Machine heating
Blue - Machine in cycle
Green - Machine ready



2 Minute Cycle Time
The G400 2 minute cycle allows for maximum output without compromising wash quality.



Advanced Customer Features
Adjust rinse aid and detergent settings and priming of chemical pumps.



Operational Data monitoring
Our machine constantly measures all cycles, heating and errors providing useful data for improving efficiencies.

Machine Features:

1 400mm x 400mm basket	2 Built-in chemical pumps	3 Energy saving standby mode	4 Removable basket guides
5 Dual wash filter system	6 Temperature interlock - guarantees hot rinse	7 Assisted self-clean	8 Noise reducing double skinned door

Hydraulic specifications

Water supply connection	G3/4" (3/4" BSP)
Minimum allowed supply water pressure	2.0 bar
Required water flow rate	11 L/min
Minimum incoming water temperature	4°C
Maximum incoming water temperature	55°C
Pumped drain height (from machine base)	540 mm

Electrical specifications

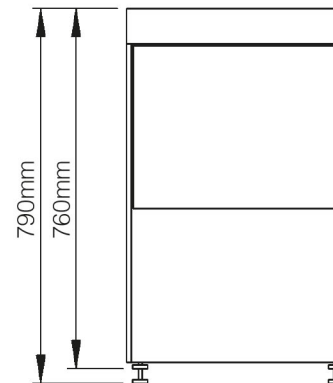
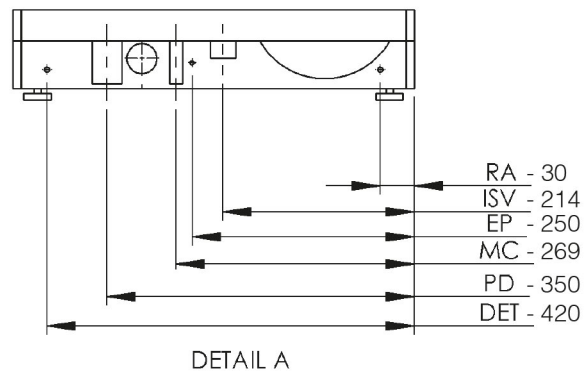
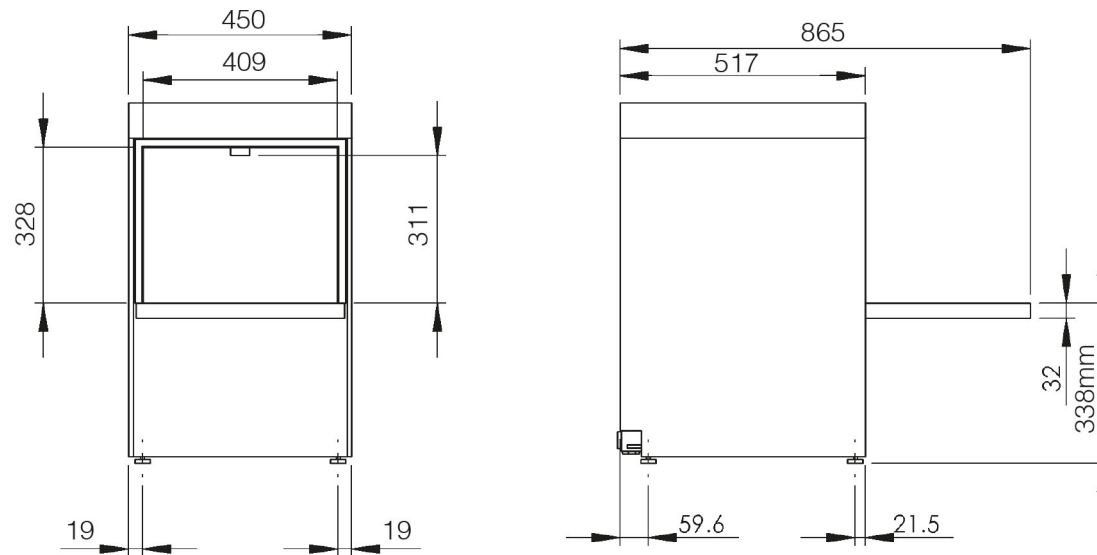
Standard Set-up

Amps Required	15A (1 phase)
Standard Operating Voltage	220-230V / 1N~ / 50Hz
Total Connected Load	3.18kW

Performance

Wash tank element	2.00kW
Rinse tank element	2.60kW
Wash tank capacity	10 litres
Rinse tank capacity	6.5 litres
Rinse water consumption at 3 bar	3.00 L/cycle
Theoretical maximum racks/hours	30
Wash tank temperature	55°C
Rinse tank temperature	82°C
Wash pump power	0.25 kW
Rinse pump power	N/A

Mechanical Specifications



Additional Info:

Wash water temperature	55°C
Glass washer rinse temperature	82°C
Noise level	Under 70dB
Empty weight	33.5kg
Fully Loaded weight	50kg
Packed weight	43.0kg

Dimensions (mm):

450 (W) x 760 (H) (790 max) x 517 (D)

Description	Symbol	Radius from machine (m)
Rinse aid tube	RA	3
Inlet solenoid valve	ISV	1.8
Mains electrical cable	EC	1.3
Pumped waste water outlet	PD	1.5
Equipotential bonding stud	EP	-
Detergent tube	DET	3

Please Note: All dimensions in mm

G400DUO Undercounter Glasswasher

Technical Specifications



CLASSEQ
Warewashing Made Simple.

G400DUO

Compact, front-loading commercial glasswasher with a digital display, two wash programs and full WRAS compliance for effortless and consistently clean results.

The G400DUO is an easy to operate, under counter glasswasher with a 350mm x 350mm basket that holds 16 pint-sized glasses. It features two wash cycles – standard (two minute) and light (1.5min), meaning that this machine is capable of washing up to 640 glasses per hour.

The digital LCD display accurately shows the temperature of the wash tank and rinse boiler, re-assuring the operator that it is up to temperature and fully sanitising during the wash cycle.

With intuitive colour coded lighting and universally recognised symbols, this machine has been designed to make operating as simple as possible, whilst also featuring performance enhancing customisations through its advanced settings mode. Additionally, its clever software constantly monitors wash cycles, temperatures, chemical usage and any errors giving valuable data which is used to improve operational efficiencies.

The Duo range of products all come with drain pumps, rinse booster pumps, built in chemical dispensers and full double skinned construction ensuring they meet all installation regulations and requirements.





UK Manufactured

Our machines are Made in Britain (Staffordshire).



LCD display

The G400DUO enhances user functionality by displaying rinse and wash tank temperatures.



Water Board (WRAS) compliant

All Duo machines are fully compliant with essential Water Board regulations.



Colour Coded Display

Amber flashing - Machine heating
Blue - Machine in cycle
Green - Machine ready



2 Wash Programs

The G500DUO Standard (2 minute) and Light (1.5min) cycles allow for maximum output without compromising wash quality.



Double skinned sides and door

Allows for quieter operation and reduced heat loss.



Advanced Customer Features

Adjust rinse aid and detergent settings, priming of chemical pumps and set water softener to match local water hardness levels (WS models only).



Operational Data monitoring

Our machine constantly measures all cycles, heating and errors providing useful data for improving efficiencies.

Hydraulic specifications

Water supply connection
Minimum allowed supply water pressure
Required water flow rate
Minimum incoming water temperature
Maximum incoming water temperature
Pumped drain height (from machine base)

G400DUO

G3/4" (3/4" BSP)
0.5 bar G400DUO model only
11 L/min G400DUO model only
4°C
55°C
540 mm

Electrical specifications

Standard Set-up

Amps Required	15A (1 phase)
Standard Operating Voltage	220-230V / 1N~ / 50Hz
Total Connected Load	3.18kW

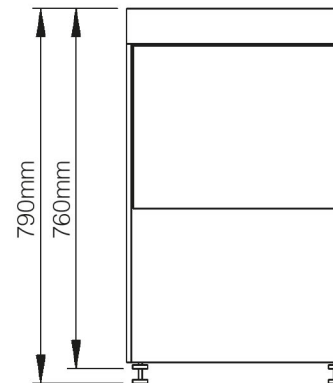
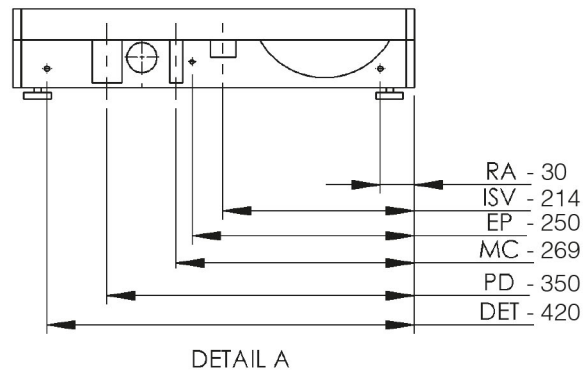
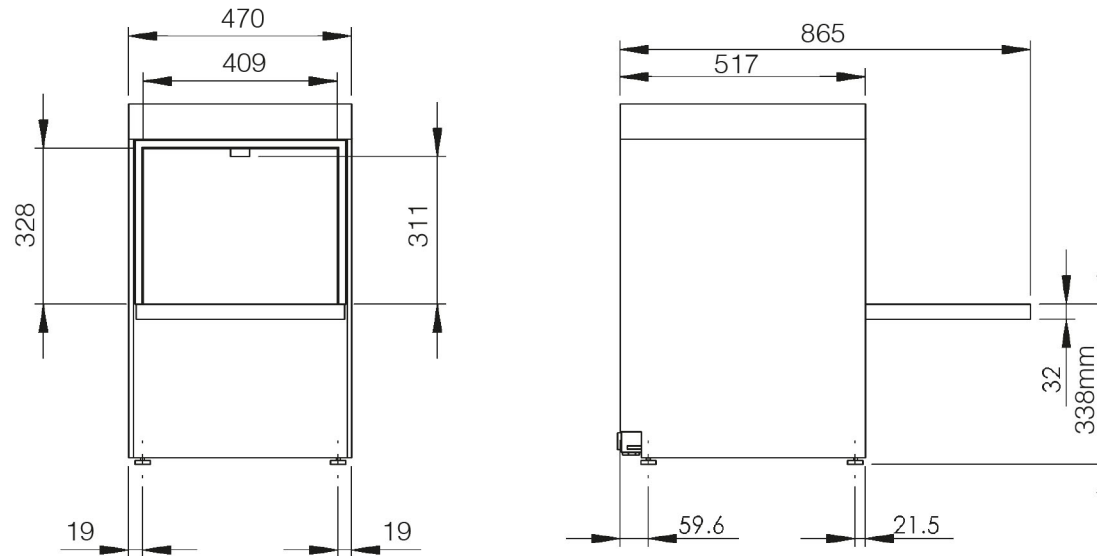
Performance

Wash tank element	2.00kW
Rinse tank element	2.60kW
Wash tank capacity	10 litres
Rinse tank capacity	6.5 litres
Rinse water consumption at 3 bar	3.00 L/cycle
Theoretical maximum racks/hours	40
Wash tank temperature	55°C
Rinse tank temperature	82°C
Wash pump power	0.25 kW
Rinse pump power	0.10kW

Machine Features:

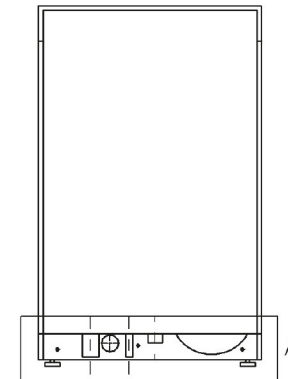
1 400mm x 400mm basket	2 Built-in chemical pumps	3 Drain pump	4 Rinse Booster Pump	5 Energy saving standby mode
6 Stainless steel dual wash filter system	7 Temperature interlock - guarantees hot rinse	8 Assisted self-clean	9 Easily removable components	

Mechanical Specifications



Additional Info:

	G400DUO
Wash water temperature	55°C
Glass washer rinse temperature	82°C
Noise level	Under 70dB
Empty weight	40.3kg
Fully Loaded weight	46.8kg
Packed weight	49.8kg G400DUO model



Dimensions (mm):

470 (W) x 760 (H) (790 max) x 517 (D)

Description	Symbol	Radius from machine (m)
Rinse aid tube	RA	3
Inlet solenoid valve	ISV	1.8
Mains electrical cable	EC	1.3
Pumped waste water outlet	PD	1.5
Equipotential bonding stud	EP	-
Detergent tube	DET	3

Please Note: All dimensions in mm

Pass Through Dishwashers

Technical Specifications



CLASSEQ
Warewashing Made Simple.

H857A H957A H957AS

High volume, simple to use, WRAS compliant dishwashers, suitable for straight-through or corner sited operations.

High volume dishwashers suitable for straight-through or corner situated operation, the Hydro machines are capable of washing up to 720 plates per hour. Reduced water consumption via 39 litre wash tank ensures minimised running costs. Easy cleaning due to the continuous hood clean and removable front panel allows excellent service access.

The Hydro Standard comes with a built-in drain pump and a rinse booster pump. It can also be upgraded to include a detergent pump.

Standard Hydro machines can be specified in either single phase 30 Amp operation or 3 phase 13 Amp.



Warewashing made simple:



UK Manufactured

Our machines are Made in Britain (Staffordshire).



Two Wash Programs

3 minute and 1.5 minute



User Friendly

We've maximised our user experience through, two simple button controls.



WRAS compliant

Type 'A' Air gap



Simple Colour Coded Display

Amber - Machine heating
Blue - Wash cycle or drain cycle when off
Red - Salt required (WS machines only)
Green - Short cycle

Machine Features:

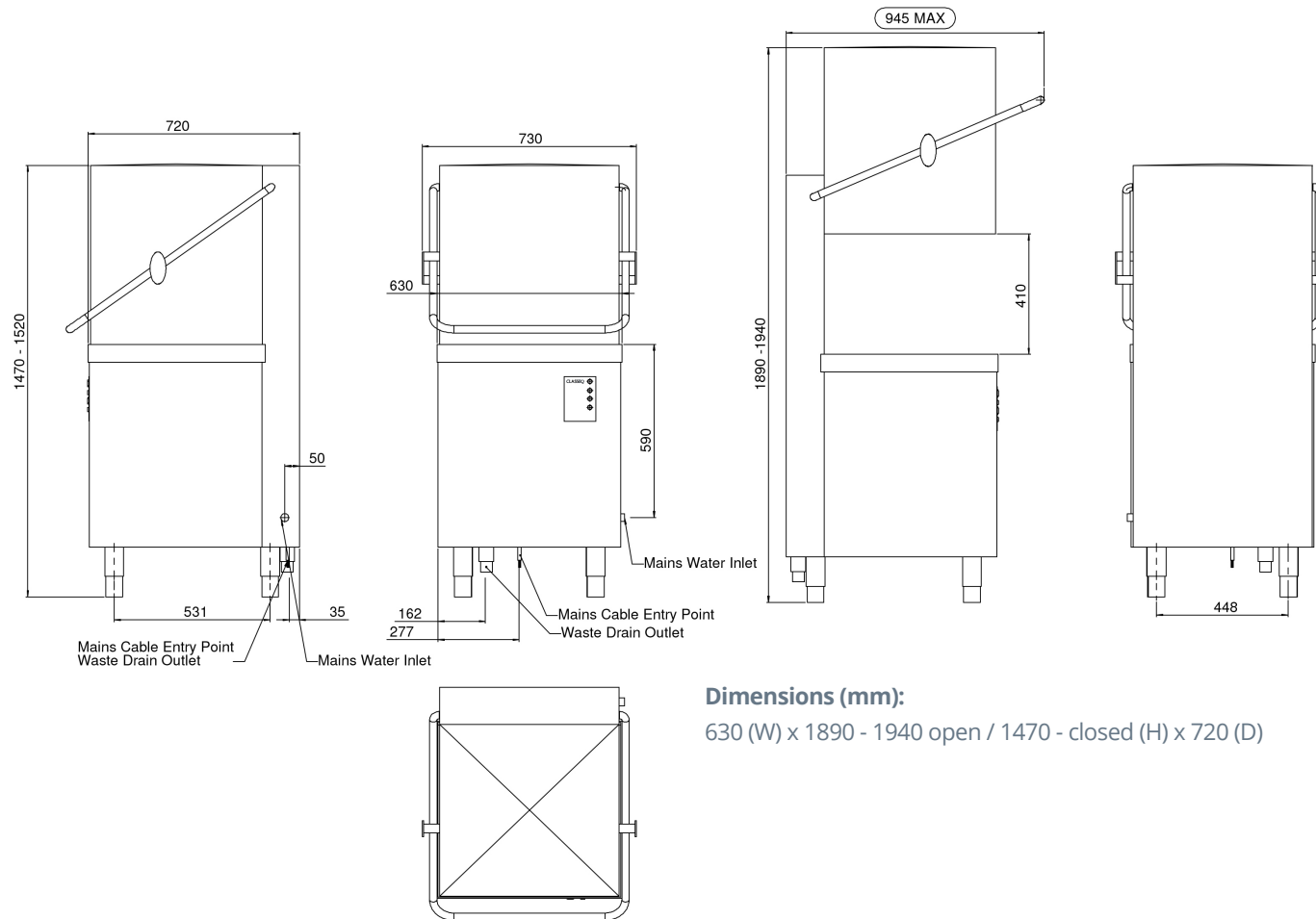
1 500mm x 500mm basket	2 Optional Built-in chemical pumps	3 Built in rinse booster pump	4 Removable basket guides
5 Dual wash filter system	6 Temperature interlock - guarantees hot rinse	7 Continuous Hood Clean System	8 High volume Dishwasher

	Everyday Use H857A Range	Intermediate Use H957A Range	Intensive Use H957AS Range
Dimensions			
Width	630mm	630mm	630mm
Depth	720mm	720mm	720mm
Height - Hood Open	1890-1940mm	1890-1940mm	1890-1940mm
Height - Hood Closed	1470-1520mm	1470-1520mm	1470-1520mm
Maximum clear entry height	385mm	385mm	385mm
Water inlet height floor level	265-315mm	265-315mm	265-315mm
Drain height floor level	0-700mm	0-700mm	0-600mm
Drain size	Ø40mm	Ø40mm	Ø40mm
Rack size	500mm ²	500mm ²	500mm ²
Hydraulic specifications			
Water supply connection	3/4"	3/4"	3/4"
Required water pressure	2.0 bar	2.0 bar	2.0 bar
Required water flow rate	8Ltrs/min	8Ltrs/min	8Ltrs/min
Electrical specifications			
Operating voltage Standard	380-415AC/50/3N	380-415AC/50/3N	380-415AC/50/3N
Operating voltage Optional	220-240AC/50/1N	-	-
Amps required - 1 Phase Water fed @	40°C - 30A 10°C - 30A	-	-
Amps required - 3 Phase Water fed @	40°C - 13A 10°C - 13A	40°C - 17A 10°C - 17A	40°C - 22A 10°C - 22A
Rinse boiler heating 380-415AC/50/3N 220-240AC/50/1N	6.00kW 6.00kW	8.64kW -	12kW -
Total Connected Load 380-415AC/50/3N 220-240AC/50/1N	6.68kW 6.68kW	9.32kW -	12.68kW -
Performance			
Maximum racks/hour	40	40	40
Max no. of plates per rack	18	18	18
Cycle Times (mins)	1.5 or 3	1.5 or 3	1.5 or 3
Operating noise level	<70dB	<70dB	<70dB
Net weight	130kg	130kg	130kg
Wash pump size	0.58kW	0.58kW	0.58kW
Wash pump capacity	380Ltrs/min	380Ltrs/min	380Ltrs/min
Wash tank capacity	39Ltrs	39Ltrs	39Ltrs
Wash tank heating	4.05kW	4.05kW	4.05kW
Wash tank temperature	55°C	55°C	55°C
Rinse boiler capacity	7.5Ltrs	7.5Ltrs	12Ltrs
Rinse boiler temperature	80°C	80°C	80°C
Rinse water consumption at 2 bar	3.25Ltrs	3.25Ltrs	3.25Ltrs

Mechanical Specifications

Additional Info:

Wash water temperature	55°C
Dish Washer rinse temperature	80°C
Noise level	Under 70dB



Dimensions (mm):

630 (W) x 1890 - 1940 open / 1470 - closed (H) x 720 (D)

Please Note: All dimensions in mm

CLASSEQ
Warewashing Made Simple.